

1. Features

- ☐ Typical 1dB bandwidth of **9.2MHz**
- ☐ High attenuation
- ☐ Single Ended Operation
- ☐ Surface Mounted Package (SMD)

RoHS Compliant

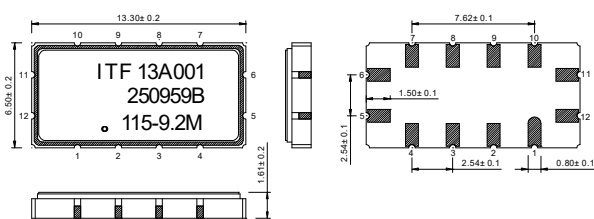
Tested by SGS Testing Korea

2. Electrical Specifications

Source and Load Impedance = 50Ω

Room Temperature : +25°C		Minimum	Typical	Maximum
Center Frequency (fo)	MHz	-	115.0	-
Insertion Loss	dB	-	23.0	24.5
1dB Bandwidth	MHz	9.1	9.22	-
3dB Bandwidth	MHz	-	9.53	-
40dB Bandwidth	MHz	-	10.88	11.0
Amplitude Ripple (fo ± 4.375 MHz)	dB	-	0.5	1.0
Group Delay Variation (fo ± 4.375 MHz)	nsec	-	90	180
Absolute Delay	usec	-	1.71	-
Ultimate Rejection	dB	40	48	-
Temperature Coefficient of Frequency	ppm/°C	-	-18	-

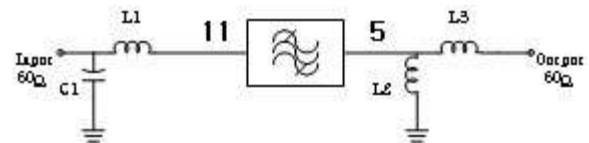
S1365 Package Dimension



Dimensions shown are nominal in millimeters

Body : Al₂O₃
Lid : Kovar, Ni Plated
Termination : Au plating 0.3 ~ 1.0um, over a 1.27 ~ 8.89um Ni Plating

Matching Schematic



L1 = 47nH, L2 = 100nH, L3 = 10nH, C1 = 51pF

Pin Configuration

Pin Configuration			
Input	11	Ground	6, 12
Output	5	Others	Ground

3. Typical Performance (at +25°C)

